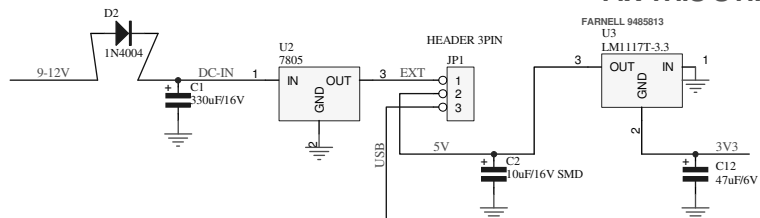
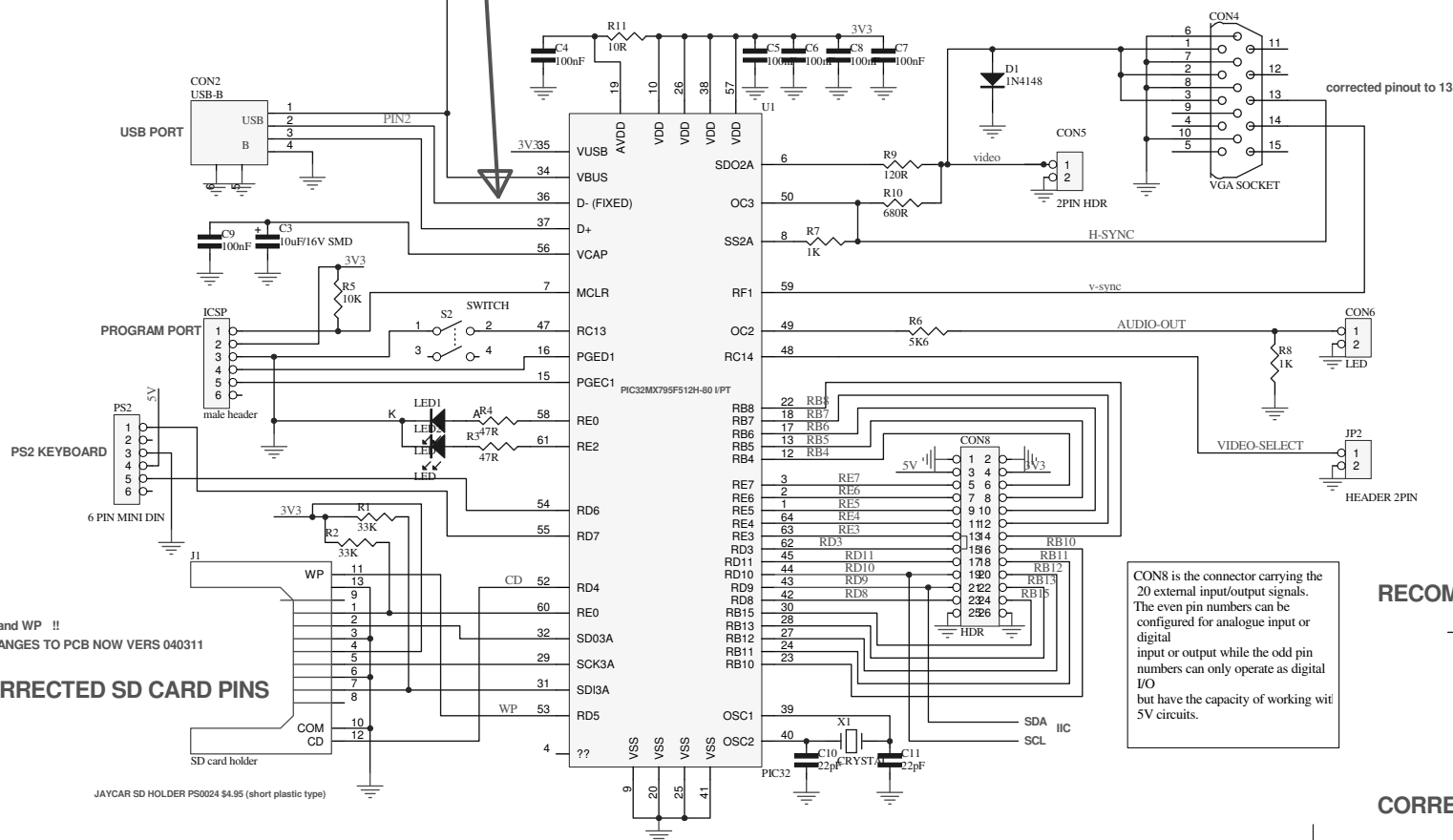


FIX THIS SYMBOL



16-0811_this pin number was wrong ! on my 1ST pcb BUT IS NOW CORRECTED



note: reversed CD and WP !!

MADE CHANGES TO PCB NOW VERS 040311

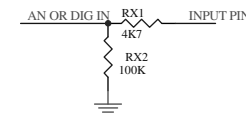
CORRECTED SD CARD PINS

JAYCAR SD HOLDER PS0024 \$4.95 (short plastic type)

FARNELL 1778989 \$17.88 +GST

CON8 is the connector carrying the 20 external input/output signals. The even pin numbers can be configured for analogue input or digital input or output while the odd pin numbers can only operate as digital I/O but have the capacity of working with 5V circuits.

RECOMENDED INPUT PROTECTION



CORRECTED SD CARD PINS

Updated on: Updated by:
COMMERCIAL-IN-CONFIDENCE
NOT TO BE DISCLOSED WITHOUT WRITTEN AUTHORITY

Title:

PCB file name:- Size: Number: Issue:

A3

Printed on: 16-Aug-2011 12:30:18 Sheet 1 of 1

File: H:\PROJECT MAXIMITE COMPUTER\PCB FINAL 160811\MAXIMITE SCHEMATIC_040311_1A_corrected.sch