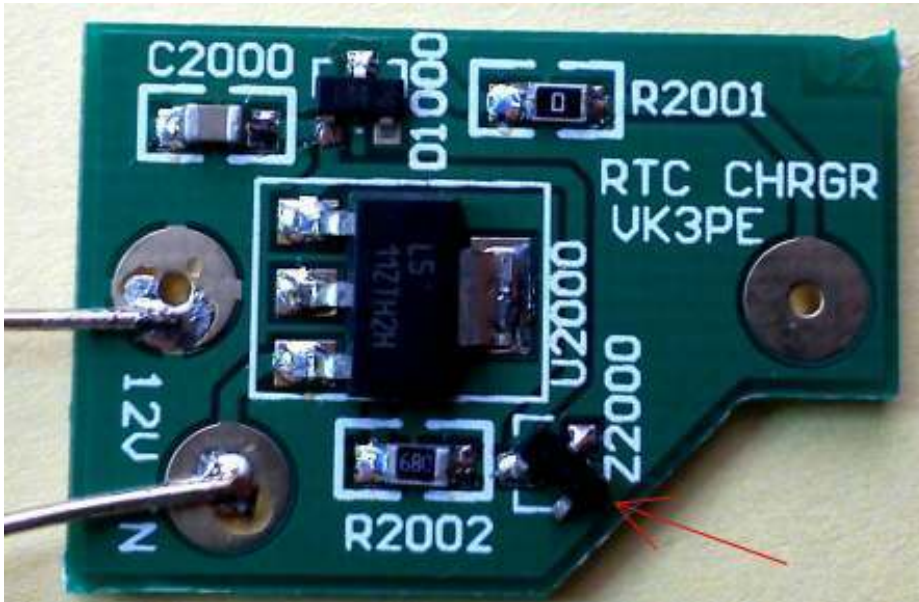
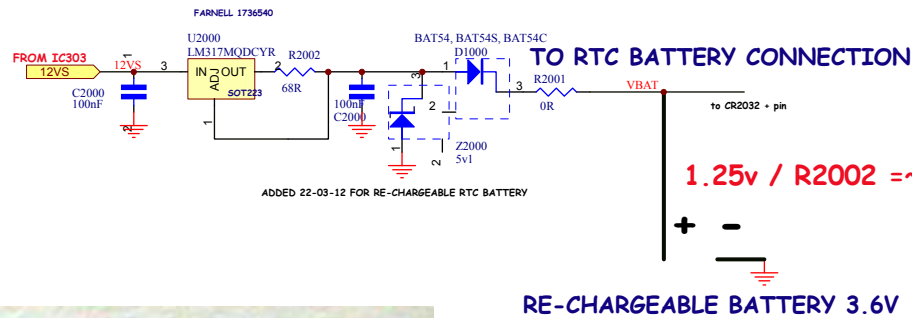


Real Time Clock, battery charger, 30-04-12 VERSION 2

This PCB was designed to fit over the CR2032 battery area of a Combo C2 board.
 An off-board 3 cell re-chargeable battery is then used.
 eg, some cordless phones have a suitable 3 cell battery in them,
 often available on eBay etc.

* On later, Combo C2a boards, this is on the main pcb. OPTIONAL REAL TIME CLOCK, BATTERY CHARGER [Prefix 2000]

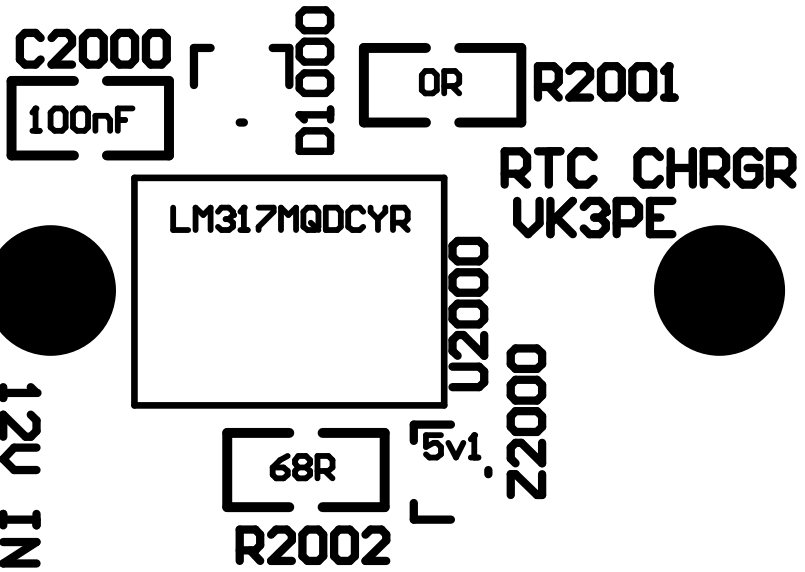


NOTE:- there is a slight error on the PCB:-

Diode Z2000 (zener) needs to be fitted in reverse.

Updated on:		Updated by:	
COMMERCIAL-IN-CONFIDENCE NOT TO BE DISCLOSED WITHOUT WRITTEN AUTHORITY			
Title:			
PCB file name:-	Size:	Number:	Issue:
	A3		
Printed on: 16-May-2012 12:25:02		Sheet 0 of 0	
File: I:\Combo-CC-draft UH\MASTER C2a 230312\RTC-CHARGER\RTC-CHARGING_2.pcb			

BAT54, BAT54S, BAT54C



REAL TIME CLOCK (RTC) BATTERY CHARGER-ADAPTER PCB

drafted 17th May 2012

vk3pe

Version	Part Type	Designator	Footprint	Description
	0R	R2001	0805	RES FIXED
	100nF	C2000	0805	Capacitor
	5v1 Zener	Z2000	SOT-23	NOTE:- diode must be fitted per picture.
	68R	R2002	0805	RES FIXED
	BAT54, BAT54S, BAT54C	D1000	SOT-23	BAT54or similar
	LM317MQDCYR	U2000	SOT-223	

This PCB is all SMD so that no component leads can interfere with the Combo C2 board.

It is fitted in place of the CR2032 battery by fitting wires through the holes. The 3 cell battery is also connected to the same points, using suitable wires. Be carefull of POLARITY ! . (see schematic)