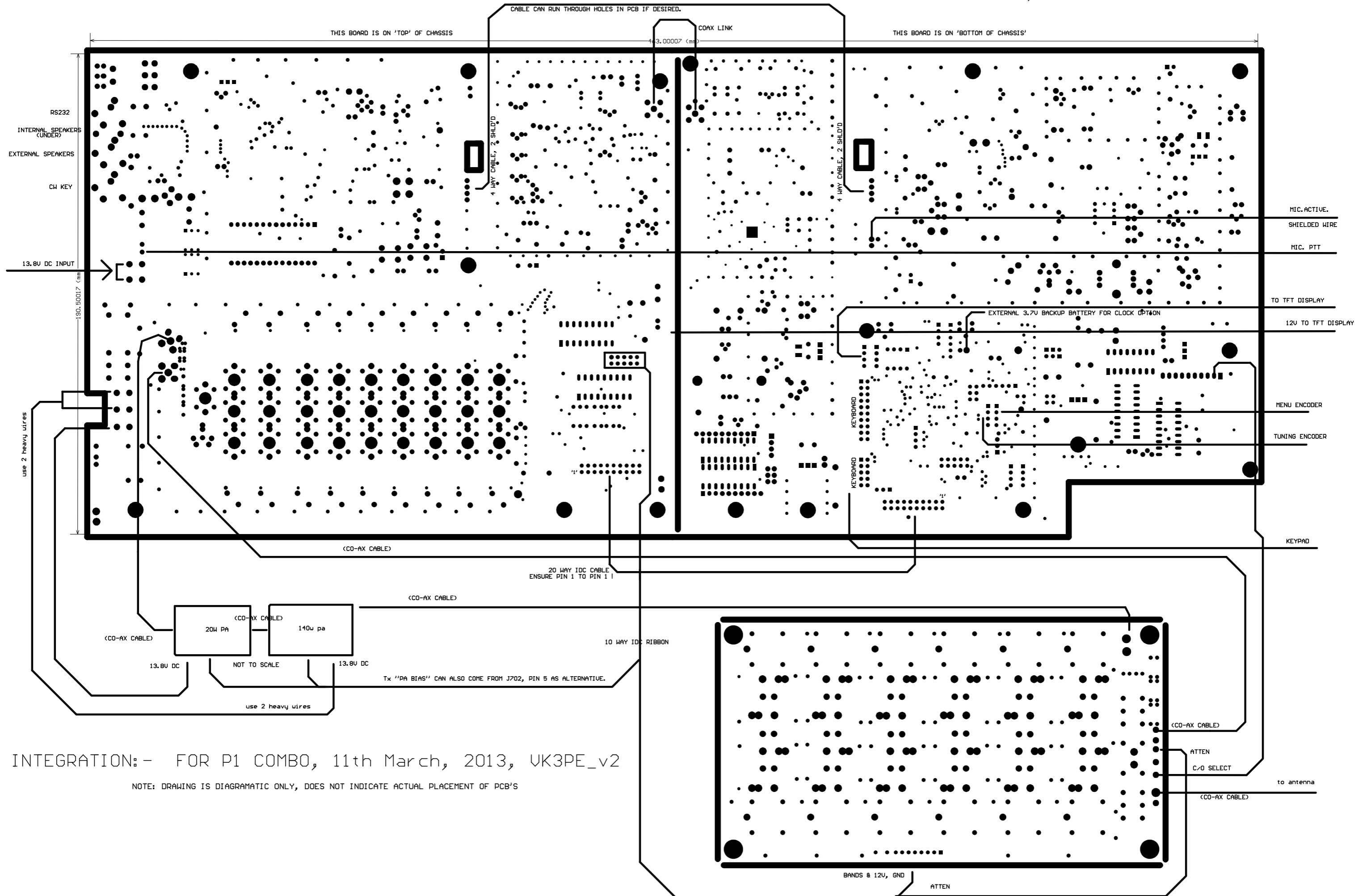
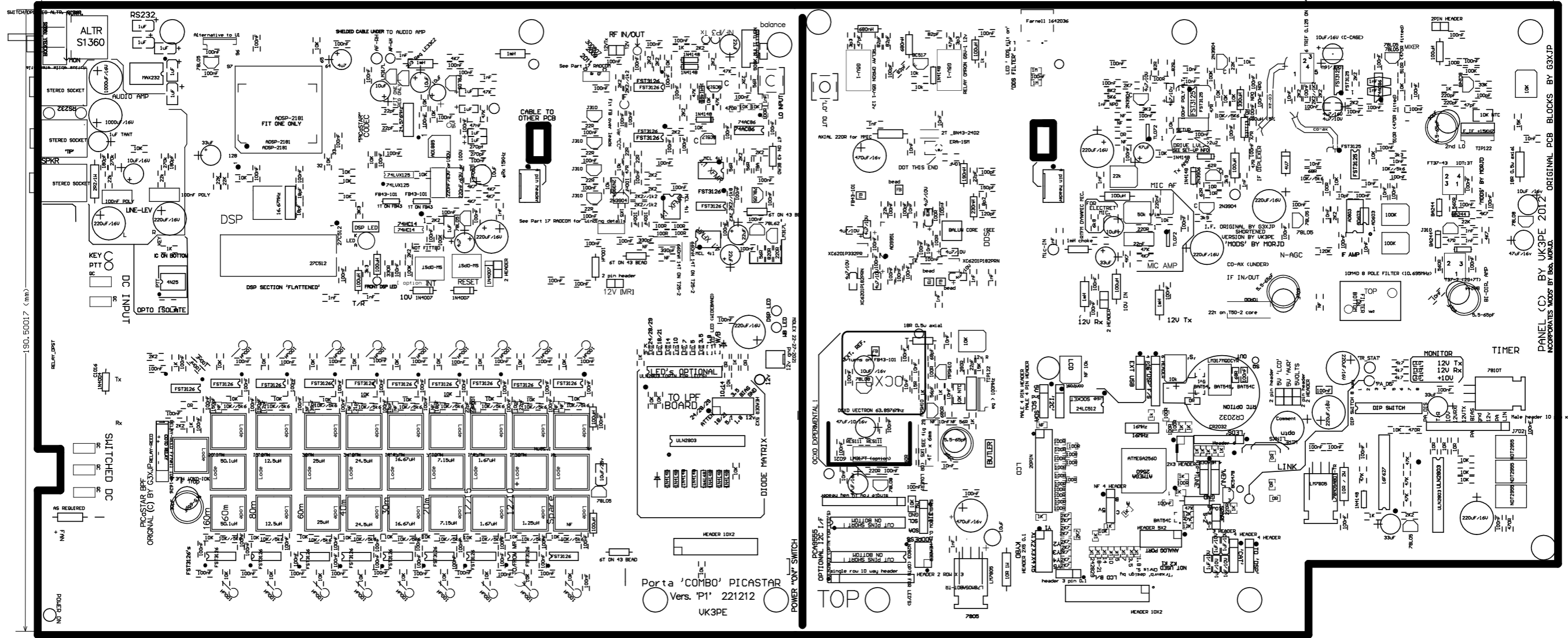


NOTE:- UNDER PCB THERE ARE CO-AX CABLES, NUMBERS INDICATE SAME CABLE



INTEGRATION:- FOR P1 COMBO, 11th March, 2013, UK3PE_v2

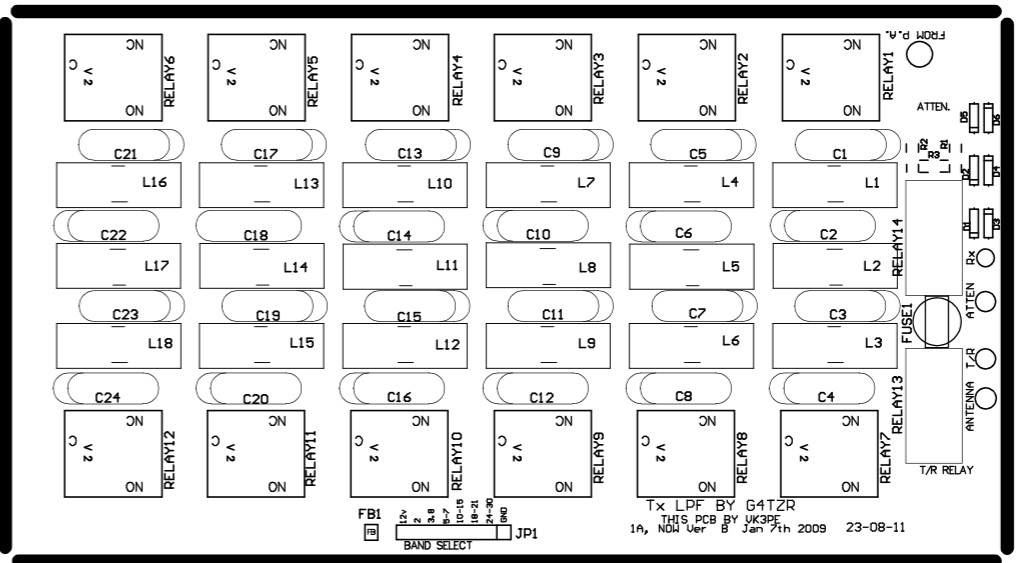
NOTE: DRAWING IS DIAGRAMATIC ONLY, DOES NOT INDICATE ACTUAL PLACEMENT OF PCB'S



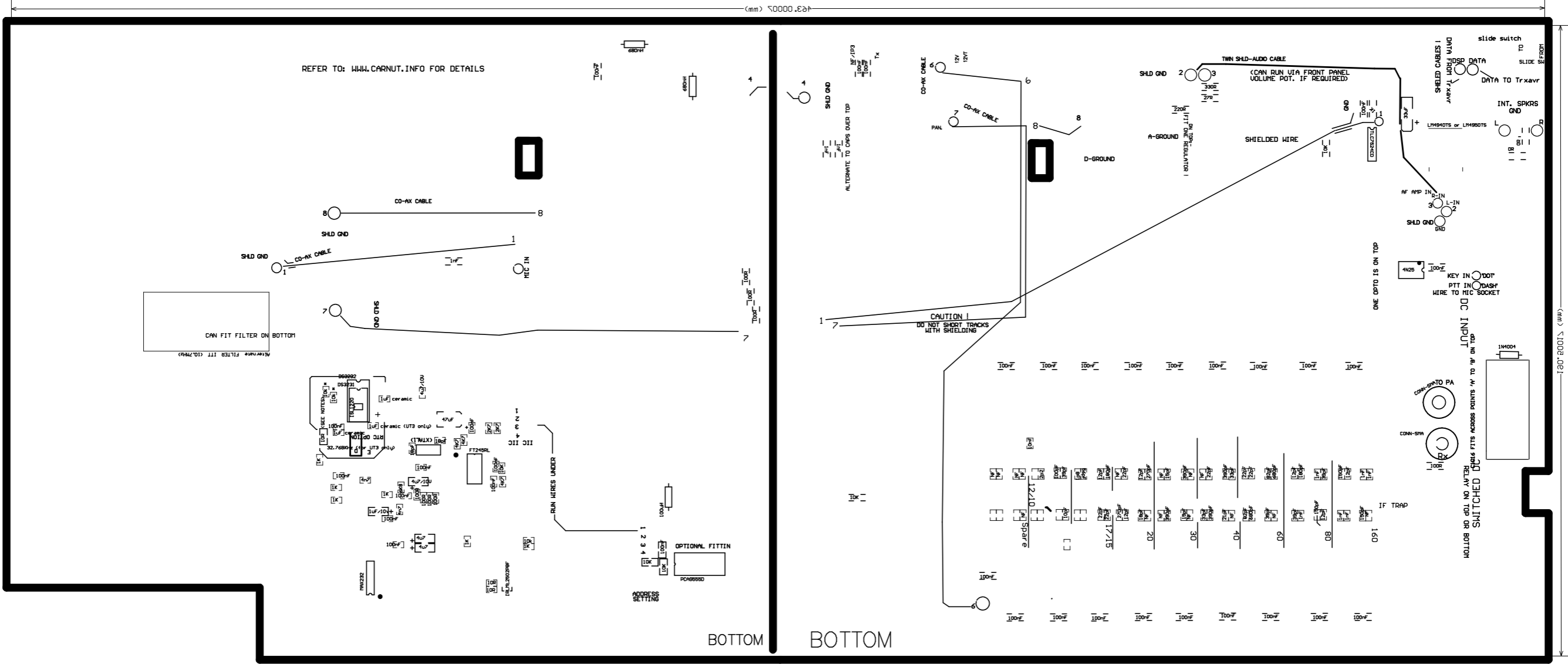
Porta 'COMBO' PICASTAR
 Vers. 'P1' 221212
 UK3PE

PANEL (C) BY UK3PE 2012
 INCORPORATES MODS BY B&S WORLD ORIGINAL PCB BLOCKS BY GSXJP

TOP



TX LDF BY G4TZR
 THIS PCB BY UK3PE
 1A, NOT Ver 2.0 Jan 7th 2009 23-08-11



	C41	C42	C38	C41	C43	C37
	C30	C45	C48	C49	C52	C57
C39 C40	C25	C27	C47	C50	C53	C55
	C28	C25	C46	C51	C54	C56
	C31	C32	C33	C34	C35	C36