



LCD FITS ON OTHER SIDE

TRIM

TRIM

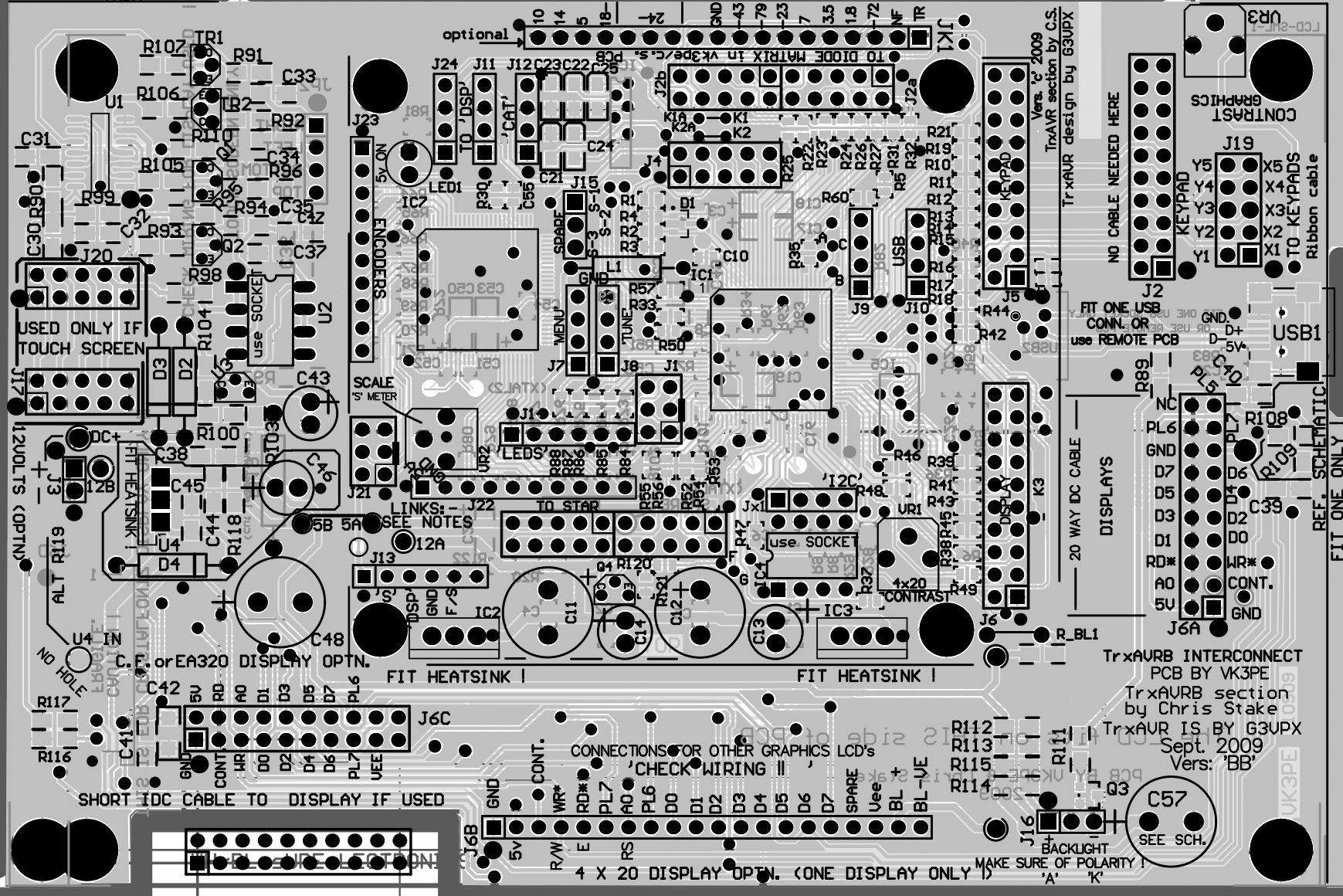
CUT PCB FOR DISPLAY USED.

TRIM

ALTJ3 FROM J3a/b

ALTJ2 FROM J2a/b

'CAUTION' ENSURE CABLES ARE PLUGGED IN CORRECTLY!  
PIN 1 TO PIN 1



USED ONLY IF TOUCH SCREEN

NO HOLE

C. F. or EA320 DISPLAY OPTN.

SHORT IDC CABLE TO DISPLAY IF USED

CONNECTIONS FOR OTHER GRAPHICS LCD's  
CHECK WIRING !!

4 X 20 DISPLAY OPTN. (ONE DISPLAY ONLY)

TrxAUR design by G3UPX  
Vers. 'c' 2009

NO CABLE NEEDED HERE

FIT ONE USB CONN. OR use REMOTE PCB

20 WAY DC CABLE

DISPLAYS

TrxAURB INTERCONNECT PCB BY VK3PE  
TrxAURB section by Chris Stake  
TrxAUR IS BY G3UPX  
Sept. 2009  
Vers: 'BB'

C57 SEE SCH.

BACKLIGHT MAKE SURE OF POLARITY!

REF. SCHEMATIC FIT ONE ONLY

