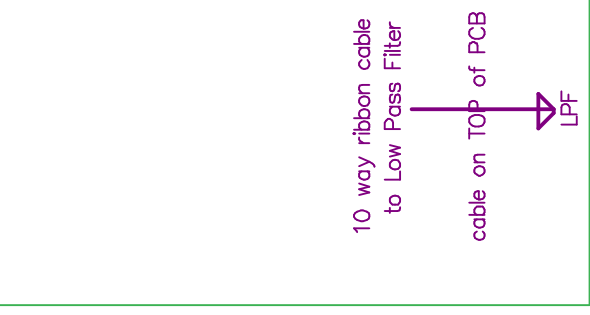
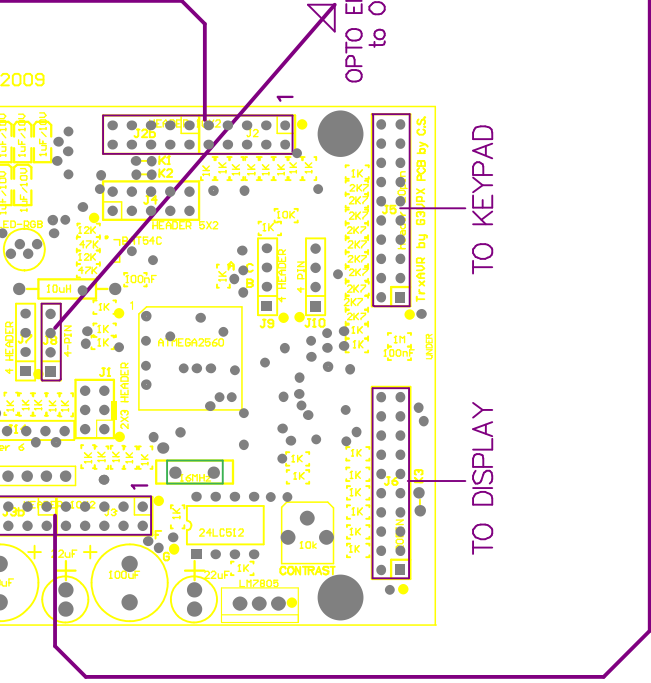


ensure Pin 1 goes to Pin1



10 way ribbon cable
to Low Pass Filter

cable on TOP of PCB

LPF

20 WAY RIBBON CABLE

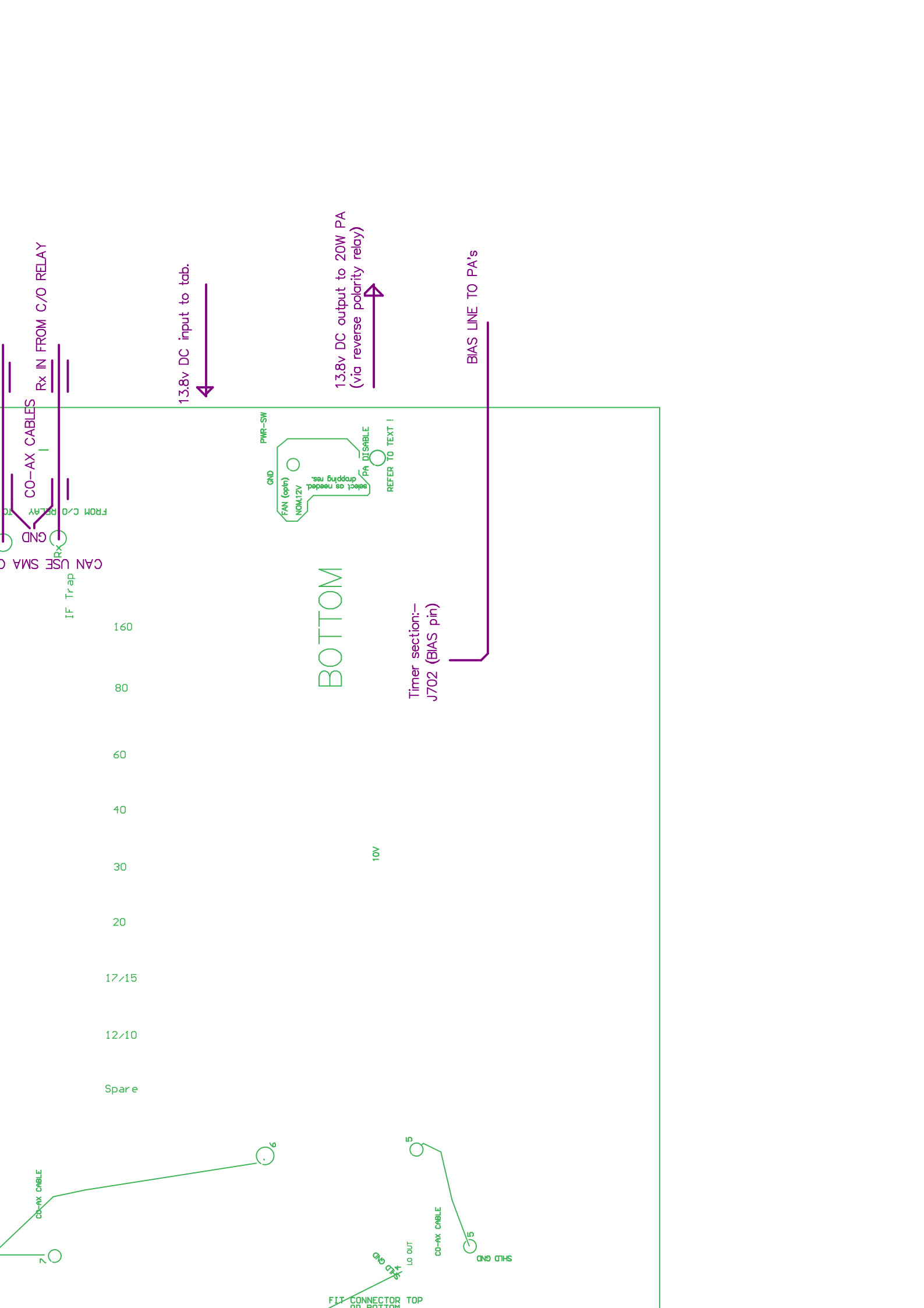
ON / OFF SWITCH

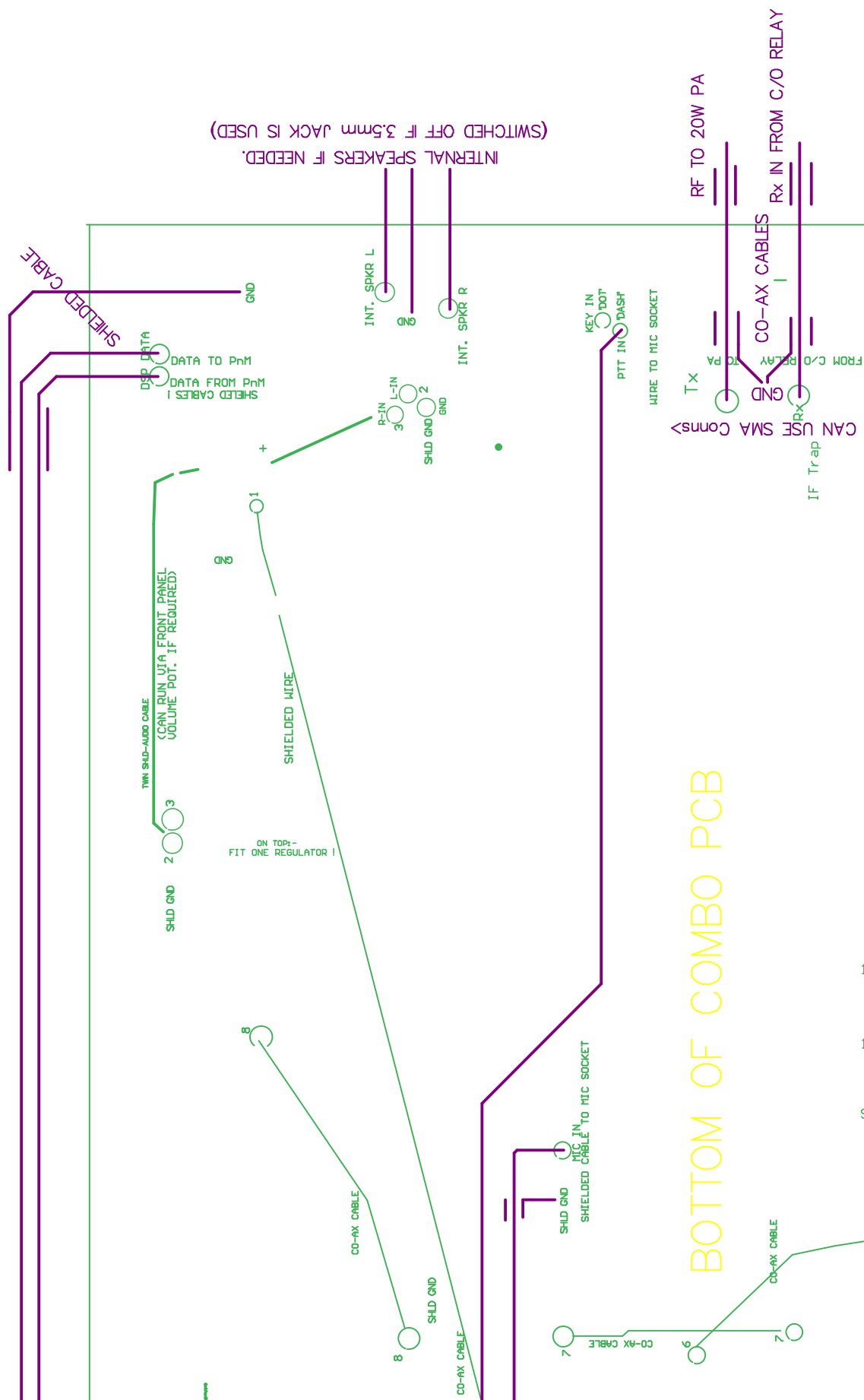


cable on TOP or BOTTOM of PCB

CO-AX CABLE

FIT CONNECTOR TOP
OR BOTTOM,
AS REQUIRED





BOTTOM OF COMBO PCB