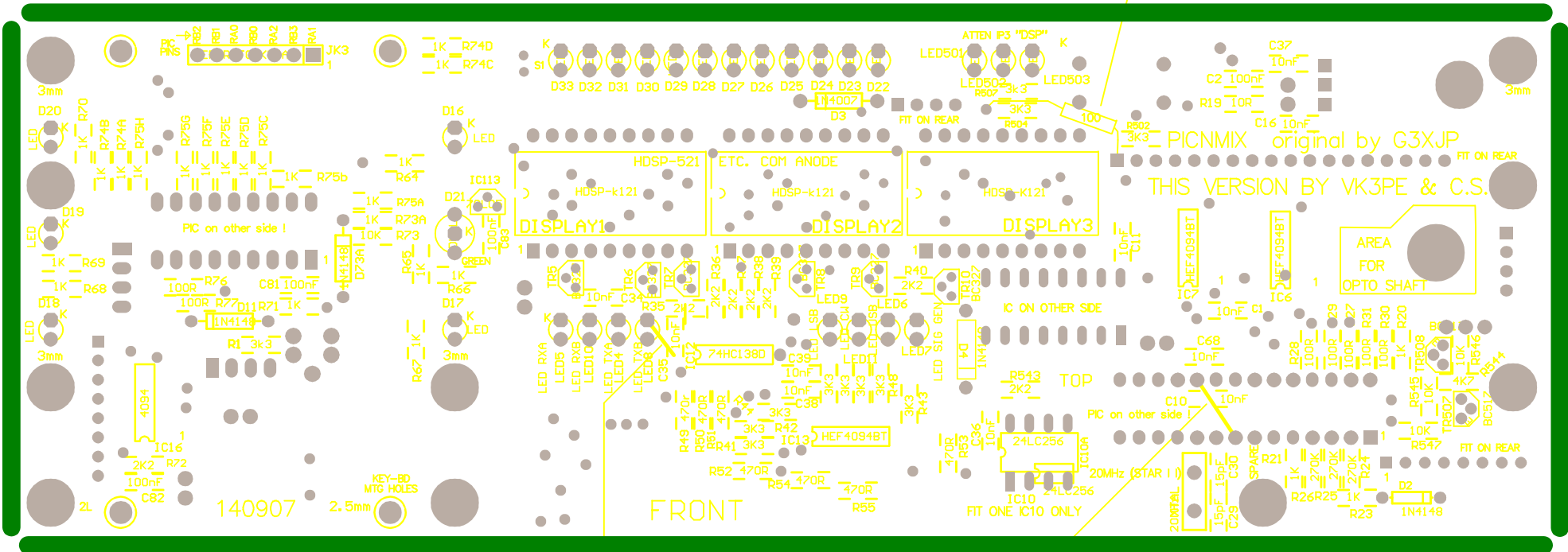


NOTE BC327's (6) are shown REVERSED on this overlay !

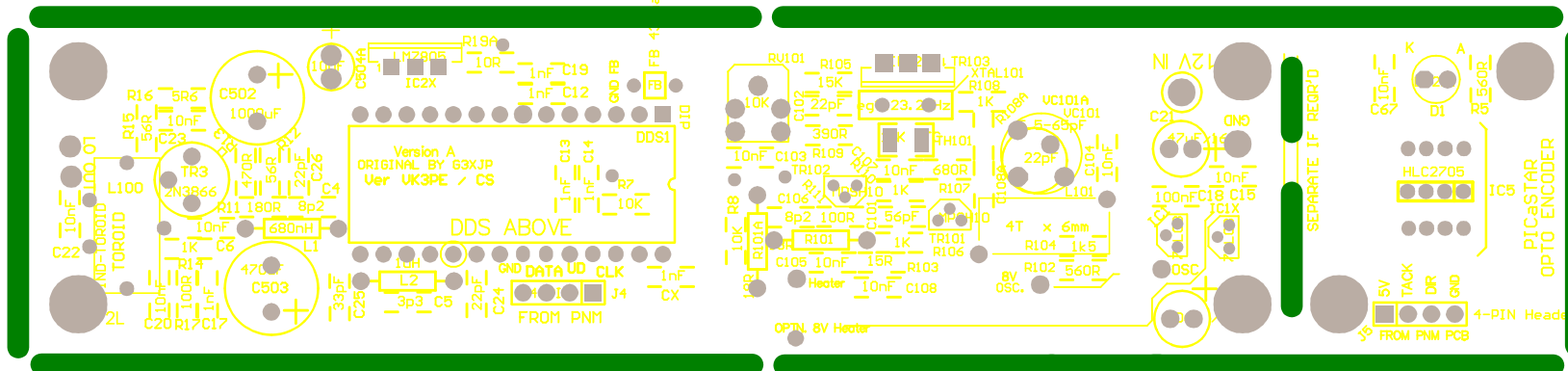
Add LINKS as below for correct Grounding.

"R2x" FIT A 100 ohm LEADED RESISTOR FROM "SPARE" TO JK1 PIN 1



LINK bottom of C35 to top of LED8 (GND)

5th Nov 07: LINK Pin 19 to pin 8 of PIC socket with a piece of resistor lead.



140907